

AARNO RUUSUVUORI 1925-1992

"Arkkitehtuuri on minulle tilan ja valon ongelma, jonka ratkaisua tukee rationaalinen rakenne. Haen töissäänni tarkoituksenmukaista kehystä ihmisten eri toiminnolle, yksinkertaisiin peruselementteihin pelkistettyä lähtökohtaa, jonka kehittyvä toiminta täyttää ja täydentää."

Arkkitehti Aarno Ruusuvuori oli suomalaisen modernin arkkitehtuurin edelläkävijöitä. Hänen merkittävimpiä töitään ovat mm. Helsingin kaupungintalon saneeraus ja laajennus (1970; 1988), Marimekon painotalo (1967; purettu), Tapiolan kirkko (1965), Weilin & Göös'n painotalo (1964-66), Hyvinkään kirkko (1961) sekä Vaasan Huutoniemen kirkko (1964).

Aarno Ruusuvuori oli laajasti kiinnostunut taiteesta; monissa töissään hän käytti eri alojen taiteilijoita asiantuntijoina, suunnittelemassa värejä, huonekaluja tai esimerkiksi kirkkoihin kuuluvaa esineistöä. Ruusuvuoren arkkitehtuuri herätti keskustelua niin maallikkojen kuin alan ammattilaistenkin parissa.

Ruusuvuori toimi Suomen Arkkitehtiliiton puheenjohtajana vuoden 1982, Rakennustaiteen seuran puheenjohtajana vuosina 1956-57 ja Suomen rakennustaiteen museon johtajana vuosina 1975-78 ja 1983-87. Lisäksi Aarno Ruusuvuori toimi useita vuosia arkkitehtuurin opettajana, erinomaisena luennoitsijana ja professorina Teknillisessä korkeakoulussa vaikuttaen kokonaisen ikäluokan arkkitehtuurikoulutukseen innostavalla ja vaikuttavalla persoonallaan. Oma toimisto hänellä oli vuodesta 1952.

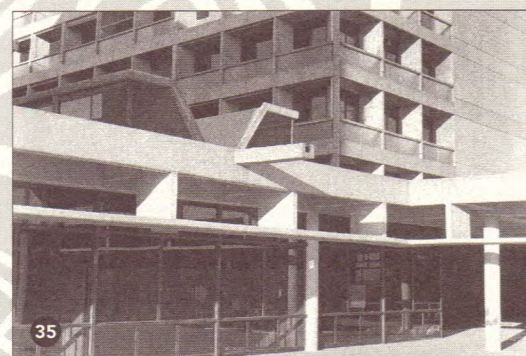
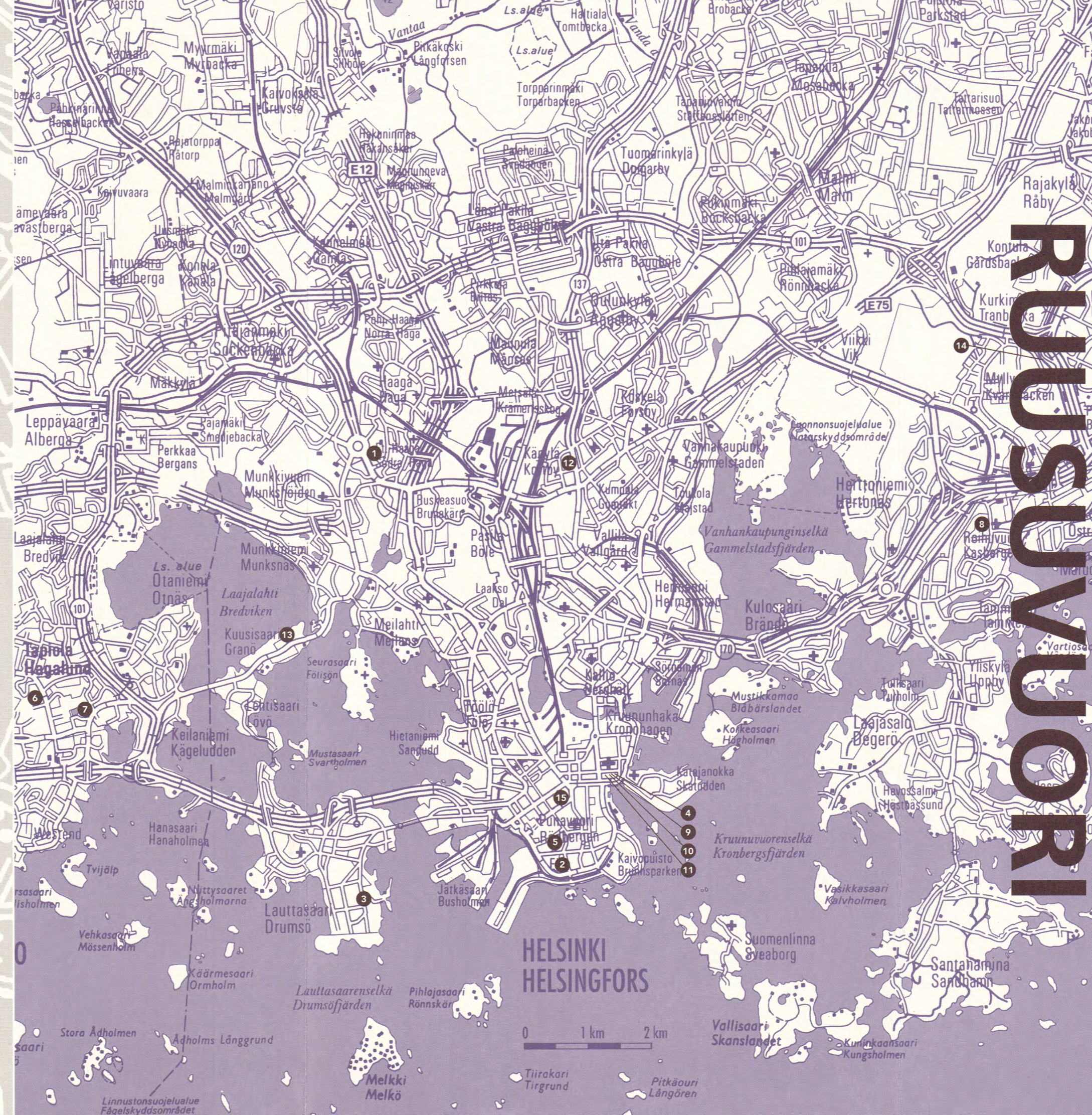
"To me architecture is a problem of space and light. The solution to this problem is backed by a rational structure. In my work I look for an appropriate frame for various human activities, a point of departure reduced to simple basic elements, rounded out and supplemented by developing activity."

Architect Aarno Ruusuvuori was one of the pioneers of modern Finnish architecture. His most important works include the renovation and extension of Helsinki City Hall (1970; 1988), Marimekko printing house (1967, since demolished), Tapiola Church (1965), Weilin & Göös printing house (1964-66), Hyvinkää Church (1961) and Vaasa Huutoniemi Church (1964).

Aarno Ruusuvuori was genuinely interested in art in a wider sense, and in many of his works he used artists from different fields for their expertise; to design colours, furniture or for instance different articles needed in the church. His notion of architecture raised much debate among the public as well as the professionals.

Ruusuvuori acted as chairman of The Finnish Association of Architects in 1982, of The Society of Finnish Architecture in 1969-1976, as editor of the Finnish Architectural Review in 1956-1957, and as director of the Museum of Finnish Architecture in 1975-1978 and again in 1983-1987. In addition to this, Aarno Ruusuvuori taught architecture for several years, and was noted as a brilliant lecturer and professor at the Helsinki University of Technology, where he influenced the training of a whole generation of architects with his inspiring and impressive personality. He also ran his own office from 1952 onwards.

RUUSUVUORI



27 Mikkelin poliisitalo / Police headquarters, Mikkel
(1968)
Maaherrankatu 10, Mikkel
kts./see ARK 1/1969, ss./pp. 30-35

"The plasticity of the form in this building stems from the cold reinforced concrete bearing structure. To balance the unrefined and rough bearing elements, special attention was paid to the details of the constructions dividing the space. The enriching feature of this placing side by side was the fresh colour scheme designed by the artist Anitra Lucander."

MUUT MAAT / OTHER COUNTRIES:

35 Real Estate Development Center Building / Pankki- ja toimistotalokortteli
(1972)
Addis Abeba, Etiopia / Ethiopia
kts./see ARK 7-8/1972, ss./pp. 22-23

"The self-evident points of departure for the design were the particular conditions determined by the soil and the climate: we needed to prepare for earthquakes as well as reduce the adverse effects of the merciless sun and the four-month-long rainy season."

36 Ateljee Klingspor / Studio Klingspor
(1983)
Wittstocksgatan 10, Tukholma, Ruotsi / Stockholm, Sweden

28 Villa Halonen ja / and sauna
(1970)
Degerby, Inkoö

29 Rauhanummen siunauskappeli ja hautausmaa / Rauhanummi Funeral chapel and cemetery
(1972)
Hausjärventie, Hyvinkää
kts./see ARK 7/1973, ss./pp. 14-17

"The gentle slope raises the cemetery and the chapel to their own separate, peaceful level. The chapel has been designed as a simple long wall on top of the hill, adding to the peaceful seclusion of the cemetery. In this way the chapel acts as a gate house to the cemetery."

30 Huvila Trollebo / Villa Trollebo
(1976)
Porkkala
kts./see ARK 7/1986, ss./pp. 52-53

31 Hyvinkään uusi seurakuntakeskus / Hyvinkää new parish centre
(1985)
Hämeenkatu 16, Hyvinkää

32 Sauna Bonsdorff
(1985)
Padasjoki, Kellostalmi
kts./see ARK 7/1987, ss./pp. 51-53

"The difference in levels on the site, the aspects of light and the opening of vistas dictated the aims of the solution: to have a long view all the way from the sauna along the Kellostalmi strait on Lake Päijänne, utilising the circulation of the sun as a balancing effect to the northern orientation, and separating the sauna and maintenance building from each other by means of the differences in level."

33 Huvila Kari Bonsdorff / Villa Kari Bonsdorff
(1988)
Padasjoki, Kellostalmi

34 Kuhmoisten Propsi, rivitaloalue / Row houses
(1989)
Kuhmoinen

TOIMITUS ON VALINNUKSESSA ESITELTÄVÄT KOHTEET RUUSUVUOREN LAAJASTA TUOTANNOSTA. / THE EDITORS HAVE SELECTED THESE STRUCTURES OUT OF THE EXTENSIVE DESIGN CAREER OF RUUSUVUORI.

TOIMITUS / EDITED BY
LEENA SIKANEN, KAIJA RAVANTTI

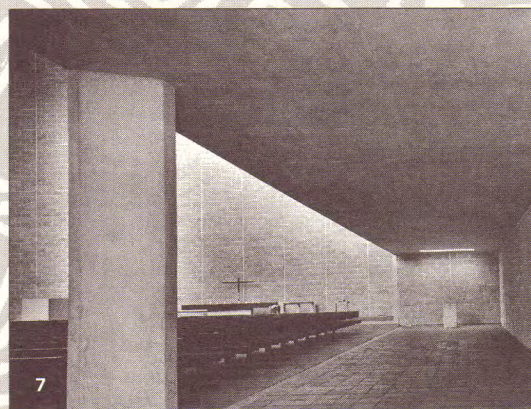
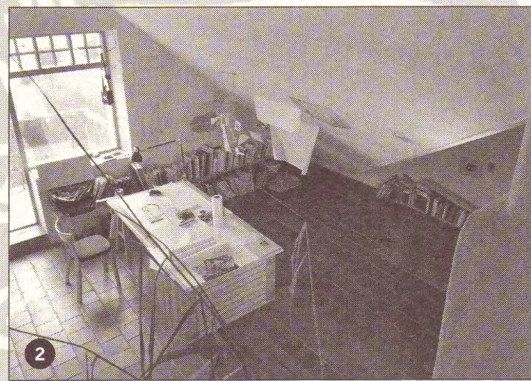
VALOKUVAT / PHOTOS
• SUOMEN RAKENNUSTAITEEN MUSEO /
MUSEUM OF FINNISH ARCHITECTURE
• RUUSUVUOREN ARKISTO /
THE ARCHIVES OF RUUSUVUORI

TEKSTILAINAUKSET / QUOTES
AARNO RUUSUVUORI

KIITOKSET / SPECIAL THANKS
ANNA JÄÄMERI-RUUSUVUORI

KARTAT / MAPS
© KARTTAKESKUS, LUPA NO L1510/96

LAYOUT
LEENAMAIJA LAINE



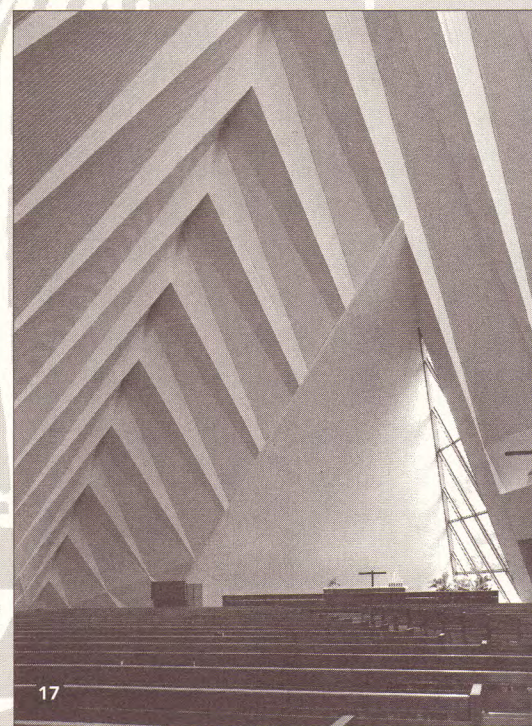
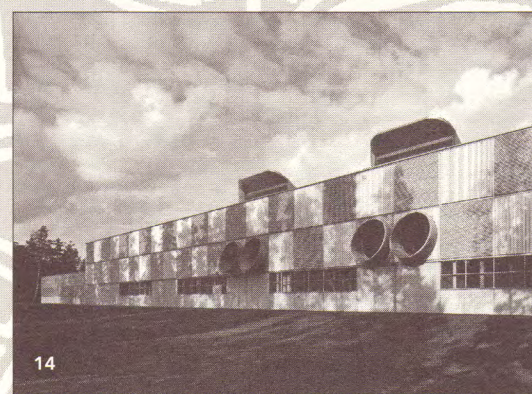
HELSINKI, ESPOO:

- 1 **VW-korjaamo / VW Car repair**
(1953)
Vanha Turun maantie 21, Helsinki
- 2 **Oma ullakkoateljee / Architect's own studio**
(1956)
Huvilakatu 2, Helsinki
kts./see ARK 6/1962, ss./pp. 49-53 (liite / appendix)
- 3 **Ateljee Pietinen / Studio Pietinen**
(1961)
Veneentekijäntie, Helsinki
kts./see ARK 10-11/1961, ss./pp. 184-190
- 4 **Helsingin kaupungin kiinteistövirasto, saneeraus / Helsinki City Real Estate Department, restoration**
(1962)
Katriinankatu 1, 3 ja Aleksanterinkatu 16, Helsinki
kts./see ARK 6/1962, ss./pp. 122-129
- 5 **As. Oy Merimiehenkatu 32 / Apartment building**
(1962)
Merimiehenkatu 32, Helsinki
kts./see ARK 7-8/1963, ss./pp. 162-167
- 6 **Weilin & Göös, kirjapaino / Printing works**
(1964/1966)
Ahertajantie 5, Espoo
kts./see ARK 7-8/1964, ss./pp. 126-135
- 7 **Tapiolan kirkko ja seurakuntakeskus / Tapiola Church and parish centre**
(1965)
Tapioraitti, Espoo
kts./see ARK 9-10/1966, ss./pp. 127-133

"A church cannot compete with massive, bright and fair-coloured tower blocks in visibility; therefore the building is merely a dark shadow in the midst of pine trees. The vicinity of a swimming hall and a hotel-restaurant have led to the church turning inwards as much as possible. Looking from the outside, it has become a closed-in world of its own secluded by its walls."

- 8 **Roihuvuoren kansakoulu / Roihuvuori Primary school**
(1967)
Vuorenpeikontie 7, Helsinki
kts./see ARK 12/1967, ss./pp. 16-19
- 9 **Kluuvin virastotalo, saneeraus ja muutostyö / Kluuvi Public office building, restoration and alteration**
(1968)
Unioninkatu 28, Helsinki
kts./see ARK 5/1968, ss./pp. 23-29

"On the basis of experience gathered here in Finland and in the other Nordic countries, it has proved a most fruitful idea to situate in a block such as the City Hall other than purely office facilities. The intention has been to liven up one of the old quarters of the town with shops, galleries, and coffee shops. In this way the old town will be able to add something positive to the townscape."



- 10 **Helsingin kaupungintalo, saneeraus ja laajennus / Helsinki City Hall, restoration and extension**
(1967-1988)
kortteli no. 30, "Leijona" / block no. 30, "Lion"
Pohjois Esplanadi 11-13, Aleksanterinkatu 20-24, Helsinki
kts./see ARK 3/1971, ss./pp. 29-35 ja/and ARK 5/1988, ss./pp. 56-63

"In this work there are two clearly distinct parts: one is the preservingly renovated row of buildings along Aleksanterinkatu with their wings to the yard, while the other is the new construction in the central zone inside the block which is closely connected to the first phase of the building. The central construction cube houses the heart of the administration: the council chamber, and beneath it the officials' restaurant. Both from inside the chamber and from the public passage, a view opens up towards the dome of the Cathedral, the symbol of the old centre of government."

- 11 **Virastotalo KT-31 / Public office building**
(1973)
Pohjois Esplanadi 15-17, Helsinki

- 12 **Paragon Oy, toimitalo / Office building**
(1973)
Mäkelänkatu 84, Helsinki
kts./see ARK 1/1974, ss./pp. 61-65

- 13 **Yksityistalo Halonen / House Halonen**
(1974)
Kuusiniementie 8, Helsinki

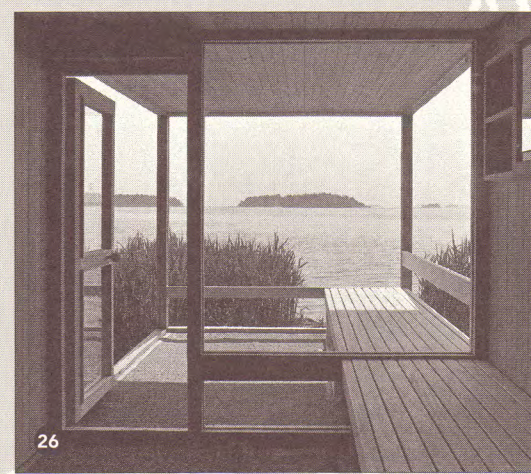
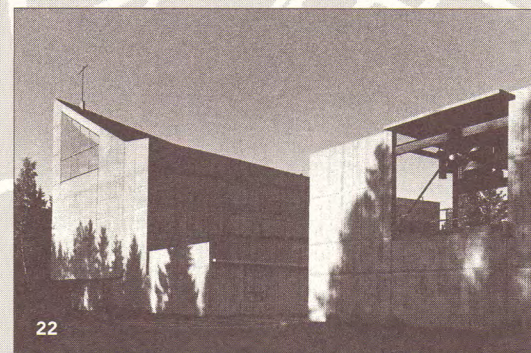
- 14 **Parate, painotalo / Printing works**
(1975)
Myllypurontie, Helsinki
kts./see ARK 3/1980, ss./pp. 30-33

"In the different sectors of designing, special consideration has been given to the development of the working environment. Through the lighting, controlling the noise level, and the unusual arrangement of air conditioning, the basic conditions for a positive character of working environment have been created, and further enhancement has been attained through the use of crisp colours."

- 15 **Kiinteistö Oy Bulevardi 14, laajennus ja julkisivusaneeraus / Extension and facade restoration**
(1985)
Bulevardi 14, Helsinki

MUU SUOMI / REST OF FINLAND:

- 16 **Aitta Ruusu vuori / Shed Ruusu vuori**
(1960)
Tavisalontie 243 b, Kerimäki
- 17 **Hyvinkään kirkko ja seurakuntakeskus / Hyvinkää Church and parish centre**
(1961)
Hämeenkatu 16, Hyvinkää
kts./see ARK 9/1961, ss./pp. 143-155



- 18 **Sauna Aho**
(1962)
Piikkiö
- 19 **Sauna Ruusu vuori**
(1963)
Tavisalontie 243 b, Kerimäki

- 20 **Hämeenlinnan kirkko, restaurointi / Hämeenlinna Church, renovation**
(1964)
Kirkkorinne, Hämeenlinna
kts./see ARK 5/1965, ss./pp. 132-137

"In the renovation work we have attempted to find something of the original austere and ascetic spirit of the church. By diminishing the lofts we have been able to recreate the dominating rise of the central dome, and by discarding all unnecessary features we have made the main hall sturdier and more open."

- 21 **Laukaan kirkko, restaurointi / Laukaa Church, renovation**
(1964)
Laukaa

- 22 **Huutoniemen kirkko ja seurakuntakeskus / Huutoniemi Church and parish centre**
(1964)
Kuninkaantie 1, Vaasa
kts./see ARK 9/1964, ss./pp. 180-192

"The buildings are grouped in the form of a wall-like mass around the yard. They are shaped as a rising spiral, culminating in the point of the church hall, which ascends like the stem of a ship."

- 23 **Venevaja Bonsdorff / Boathouse Bonsdorff**
(1966)
Padasjoki, Kellossalmi

- 24 **Orijärven kartano, restaurointi / Orijärvi Manor, renovation**
(1966)
Kisko

- 25 **Marimekon koetalo / Marimekko experimental house**
(1967)
Bökars, Porvoon maalaiskunta
kts./see ARK 7-8/1966, ss./pp. 116-117

- 26 **Elementtisauna / Prefabricated sauna**
(1968)
Kemiö

(samanlainen sauna: / similar sauna: Dallas Design research)